

Containment - Aisle Containment



www.enconnex.com

sales@enconnex.com

Enconnex hot and cold-aisle containment systems isolate chilled supply air from hot exhaust air and minimize cooling loss by focusing chilled air on equipment. Aisle containment contributes to energy savings by enable the increase of supply air and water temperature set points, and protects sensitive equipment by eliminating hotspots and improving the overall cooling potential of data center air conditioning units.

APPLICATIONS

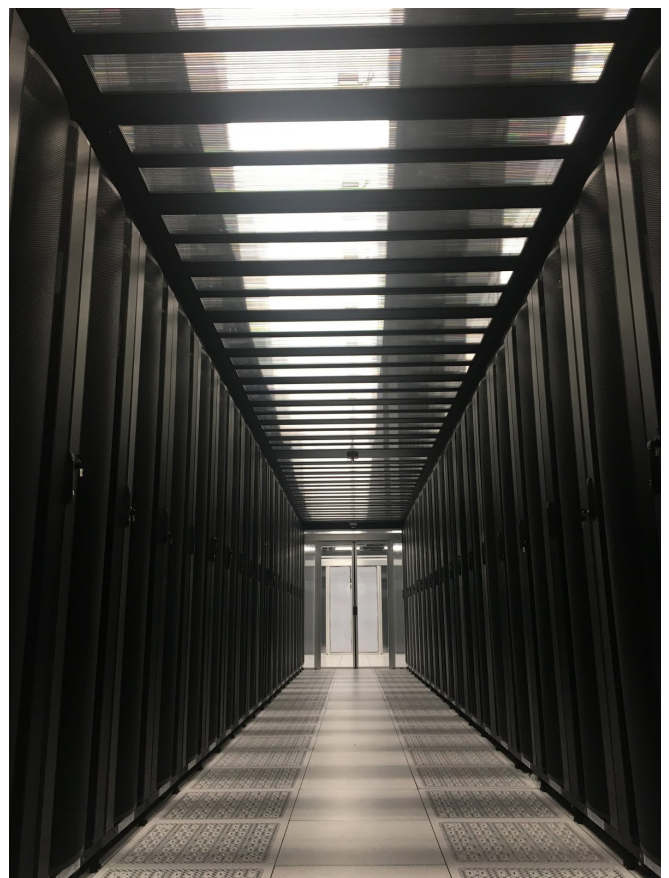
- Data Centers
- Lab Environments
- High-density applications
- Energy rebate programs

KEY FEATURES

- Ideal for new data center buildouts
- Customizable design
- Fits any energy savings plan
- Eliminates hot and cold air mixing
- Works in both raised-floor and slab environments
- Increases cooling capacity and airflow
- Less investment, yielding more savings
- Maximizes data center cooling efficiencies

PRODUCT FEATURES

- Fully customizable setup
- Containment types
- Aisle types
- Multiple door sizes
- Multiple roof options
- Panel selection
- Security options
- Additional accessories



Containment Accessories - Dual Sliding Doors

SKU#: ECX-CTMT-12DS-2275, ECX-CTMT-18DS-2275, ECX-CTMT-S12DS-001, ECX-CTMT-T12DS-001



www.enconnex.com
sales@enconnex.com

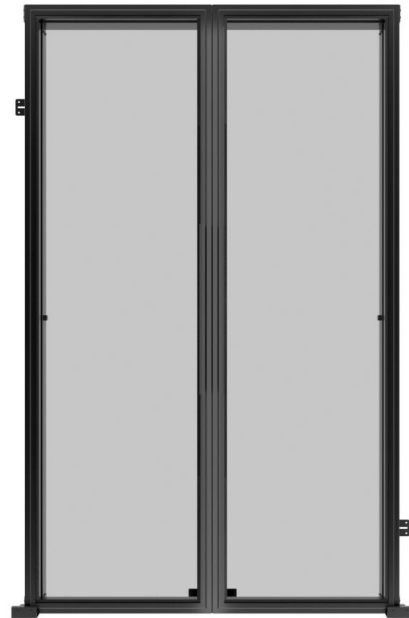
Enconnex Dual Sliding Doors are the ideal solution for both cold and hot aisle containment designs. Combining cost-effectiveness with ease of installation, the no threshold design eliminates tripping hazards, and complements data center designs. The Enconnex Containment Dual Sliding Door with auto close feature is available for 4 and 6 feet aisles and different height options.

APPLICATIONS

- Data Centers
- Lab Environments
- High-density applications
- Energy rebate programs

PRODUCT FEATURES

- Pre-assembled dual sliding door, fast installation
- No threshold design prevents tripping
- Perimeter compression gaskets efficiently seal and minimize air leakage.
- Auto holds when doors fully open and auto close when doors are not fully open.



PHYSICAL SPECIFICATIONS	ECX-CTMT-12DS-2275	ECX-CTMT-18DS-2275	ECX-CTMT-12DS-001	ECX-CTMT-T12DS-001
Physical Dimensions (inch/mm)	89.6" x 55.2" x 5" (2275 x 1402 x 127 mm)	89.6" x 75.9" x 5.7" (2275 x 1929 x 144 mm)	85.6" x 55.2" x 5" (2175 x 1402 x 127 mm)	98" x 55.2" x 5" (2490 x 1402 x 127 mm)
Net Weight (lbs/kg)	187.4 lbs (85 kg)	253.5 lbs (115 kg)	231.5 lbs (105 kg)	253.5 lbs (115 kg)
Shipping Dimensions (inch/mm)	90.6" x 57.3" x 16.9" (2300 x 1455 x 430 mm)	90.6" x 57.3" x 19.7" (2300 x 1455 x 500 mm)	88.2" x 55.1" x 16.9" (2240 x 1400 x 430 mm)	100" x 55.1" x 16.9" (2540 x 1400 x 430 mm)
Shipping Weight (lbs/kg)	551.1 lbs (250 kg)	683.4 lbs (310 kg)	639.3 lbs (290 kg)	683.4 lbs (310 kg)
Cabinet Size	48U	48U	42U, 45U	48U, 52U
Aisle Width	1200 mm, 4 ft	1800 mm, 6 ft	1200 mm, 4 ft	1200 mm, 4 ft
Color	Black	Black	Black	Black
Cycle Times	10000	10000	10000	10000
Moving Style	Semi-Auto close, Open hold	Semi-Auto close, Open hold	Semi-Auto close, Open hold	Semi-Auto close, Open hold
Shipping	2pcs per pallet	2pcs per pallet	2pcs per pallet	2pcs per pallet



Containment Accessories - Tilt Window System

SKU# ECX-612-SPLIT-TLT-CLG-001, ECX-612-SGL-TLT-CLG-001, ECX-618-SPLIT-TLT-CLG-001, ECX-618-SGL-TLT-CLG-001



www.enconnex.com

sales@enconnex.com

The Enconnex containment tilt window system is a durable solution for cold aisle containment. It will separate cold and hot air for more efficient cooling and during a fire event it will provide an unobstructed sprinkler coverage by automatically tilt open all the ceiling windows.

APPLICATIONS

- Data Centers
- Lab Environments
- High-density applications
- Energy rebate programs

PRODUCT FEATURES

- Electromagnetic lock controls tilt window position
- Reusable solution
- Split tilt window design reduce the clearance requirement on both side
- Single tilt window design the dedicated space for camera mounting
- Easily integrated with BMS



PHYSICAL SPECIFICATIONS	ECX-612-SPLIT-TLT-CLCLG-001	ECX-612-SGL-TLT-CLG-001	ECX-618-SPLIT-TLT-CLG-001	ECX-618-SGL-TLT-CLG-001
Physical Dimensions (inch/mm)	54" x 23.6" x 2.8" (1372.8 x 599 x 72.3 mm)	54" x 23.6" x 2.8" (1372.8 x 599 x 72.3 mm)	54" x 23.6" x 2.8" (1372.8 x 599 x 72.3 mm)	78" x 23.6" x 2.8" (1981.8 x 599 x 72.3 mm)
Net Weight (lbs/kg)	33.1 lbs (15 kg)	46.3 lbs (21 kg)	35.9 lbs (16.3 kg)	36.8 lbs (16.7 kg)
Shipping Dimensions (inch/mm)	551" x 256" x 36" (14000 x 6500 x 923 mm)	551" x 256" x 36" (14000 x 6500 x 923 mm)	866" x 256" x 36" (22000 x 6500 x 923 mm)	866" x 256" x 36" (22000 x 6500 x 923 mm)
Shipping Weight (lbs/kg)	529 lbs (240 kg)	511 lbs (250 kg)	578 lbs (262 kg)	607 lbs (275.2 kg)
Aisle Width	1200 mm, 4 ft	1200 mm, 4 ft	1800 mm, 6 ft	1800 mm, 6 ft
Color	Black	Black	Black	Black
Shipping	10pcs per pallet	10pcs per pallet	10pcs per pallet	10pcs per pallet



Containment Accessories - Support Panel

SKU# ECX-61.3-CBT-SUP-PNL-001, ECX-81.3-CBT-SUP-PNL-001



www.enconnex.com

sales@enconnex.com

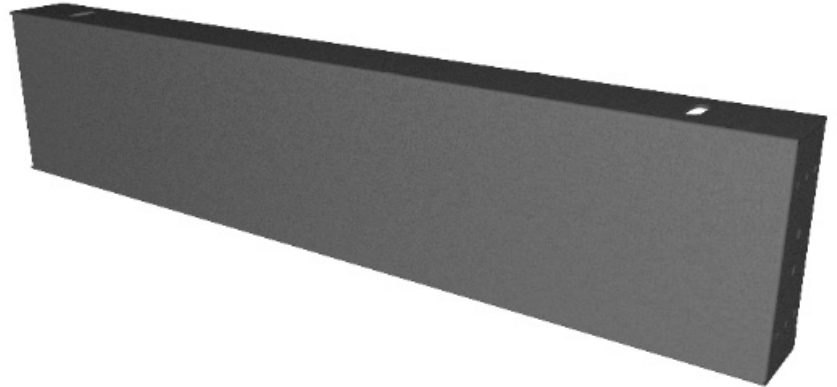
The Enconnex Containment support panel for tilt window adding clearance between tilt window and cabinet. Accessories for Containment tilt window system, to lift up the tilt window and add clearance for tilt window, this will make sure the tilt window will fully open in a fire event.

APPLICATIONS

- Data Centers
- Lab Environments
- High-density applications
- Energy rebate programs

PRODUCT FEATURES

- Adding clearance between tilt window and cabinet
- Elongated slot for easy installation



PHYSICAL SPECIFICATIONS	ECX-61.3-CBT-SUP-PNL-001	ECX-81.3-CBT-SUP-PNL-001
Physical Dimensions (inch/mm)	23.6" x 2.0" x 5.1" (599 x 50 x 130 mm)	31.5" x 2.0" x 5.1" (799 x 50 x 130 mm)
Net Weight (lbs/kg)	5.46 lbs (2.48 kg)	6.9 lbs (3.2 kg)
Shipping Dimensions (inch/mm)	102.4" x 12.6" x 24.4" (2600 x 320 x 620 mm)	133.9" x 12.6" x 24.4" (3400 x 320 x 620 mm)
Shipping Weight (lbs/kg)	5.84 lbs (2.65 kg)	8.22 lbs (3.73 kg)
Aisle Width	1200 mm, 4 ft	1200 mm, 4 ft
Color	Black	Black
Shipping	4pcs per pallet	4pcs per pallet



Containment Accessories - Aisle Support Panel

SKU# ECX-4ft-AIS-SUP-PNL-001, ECX-6ft-AIS-SUP-PNL-001
ECX-1200-AIS-SUP-PNL-001, ECX-1800-AIS-SUP-PNL-001

The Enconnex Aisle Support Panel is one of the accessories for Containment tilt window system, to secure the containment structure, also separate the cold and hot air at the containment row end



www.enconnex.com
sales@enconnex.com

APPLICATIONS

- Data Centers
- Lab Environments
- High-density applications
- Energy rebate programs

PRODUCT FEATURES

- Support the containment structure from movement
- Seal and separate the cold and hot air at the containment row end



PHYSICAL SPECIFICATIONS	ECX-4FT-AIS-SUP-PNL-001	ECX-6FT-AIS-SUP-PNL-001	ECX-1200-AIS-SUP-PNL-001	ECX-1800-AIS-SUP-PNL-001
Physical Dimensions (inch/mm)	52.2" x 5.1" x 0.04" (1327.1 x 130.7 x 1 mm)	76.1" x 5.1" x 0.04" (1933.8 x 130.7 x 1 mm)	51.4" x 5.1" x 0.04" (1305 x 130.7 x 1 mm)	75" x 5.1" x 0.04" (1905 x 130.7 x 1 mm)
Net Weight (lbs/kg)	3 lbs (1.4 kg)	4.38 lbs (1.99 kg)	2.95 lbs (1.34 kg)	4.31 lbs (1.96 kg)
Aisle Width	4 ft	4 ft	1200 mm	1800 mm
Color	Black	Black	Black	Black



Containment Accessories - Bookend Support Panel

SKU# ECX-1100-BED-SUP-PNL-001, ECX-1200-BED-SUP-PNL-001, ECX-BED-SUP-CON



www.enconnex.com
sales@enconnex.com

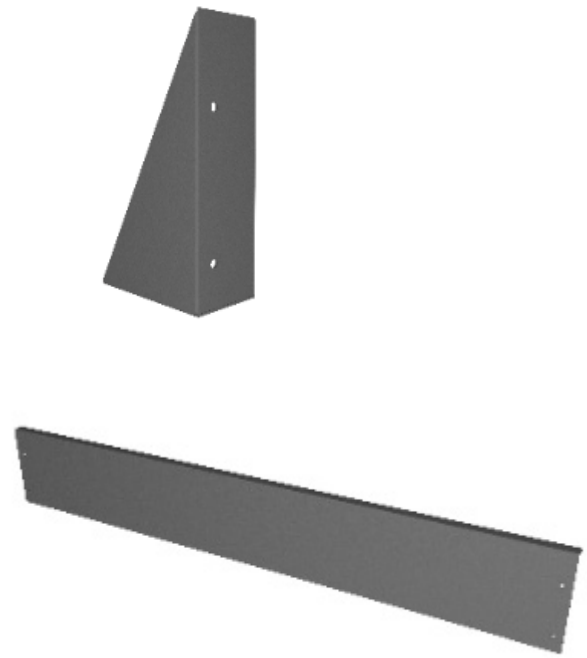
The Enconnex Bookend Support Panel is an accessory for the Containment tilt window system, to mount the containment doors, also provide a mounting structure for the aisle support panel. The panel is mounted at the containment bookend, side of cabinet position.

APPLICATIONS

- Data Centers
- Lab Environments
- High-density applications
- Energy rebate programs

PRODUCT FEATURES

- For containment door mounting
- Seal and separate the cold and hot air at the containment row end



PHYSICAL SPECIFICATIONS	ECX-1100-BED-SUP-PNL-001	ECX-1200-BED-SUP-PNL-001	ECX-BED-SUP-CON
Physical Dimensions (inch/mm)	39.5" x 6.2" x 0.8" (1003 x 157 x 20 mm)	43.4" x 6.2" x 0.8" (1103 x 157 x 20 mm)	3.1" x 1.8" x 6" (80 x 45 x 153 mm)
Net Weight (lbs/kg)	6.59 lbs (2.99 kg)	7.3 lbs (3.3 kg)	0.44 lbs (0.2 kg)
Color	Black	Black	Black



Containment Accessories - Fixed Ceiling Tile

SKU# ECX-212-FXD-CLG-001, ECX-218-FXD-CLG-001



www.enconnex.com

sales@enconnex.com

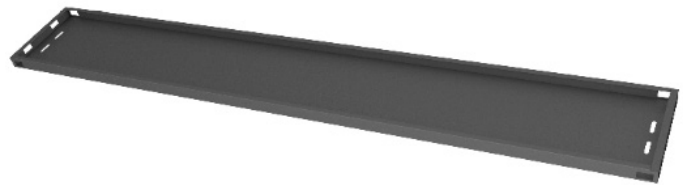
The Enconnex Fixed Ceiling Tile provides a stable mounting space for camera, horn and strobe at the middle or end of the containment row.

APPLICATIONS

- Data Centers
- Lab Environments
- High-density applications
- Energy rebate programs

PRODUCT FEATURES

- Space for camera, horn and strobe mounting



PHYSICAL SPECIFICATIONS	ECX-212-FXD-CLG-001	CX-218-FXD-CLG-001
Physical Dimensions (inch/mm)	54" x 1.1" x 7.8" (1372.8 x 27 x 199 mm)	78" x 1.1" x 7.8" (1982 x 27 x 199 mm)
Net Weight (lbs/kg)	5.64 lbs (2.56 kg)	10.58 lbs (4.8 kg)
Aisle Width	1200 mm	1800 mm
Color	Black	Black

